

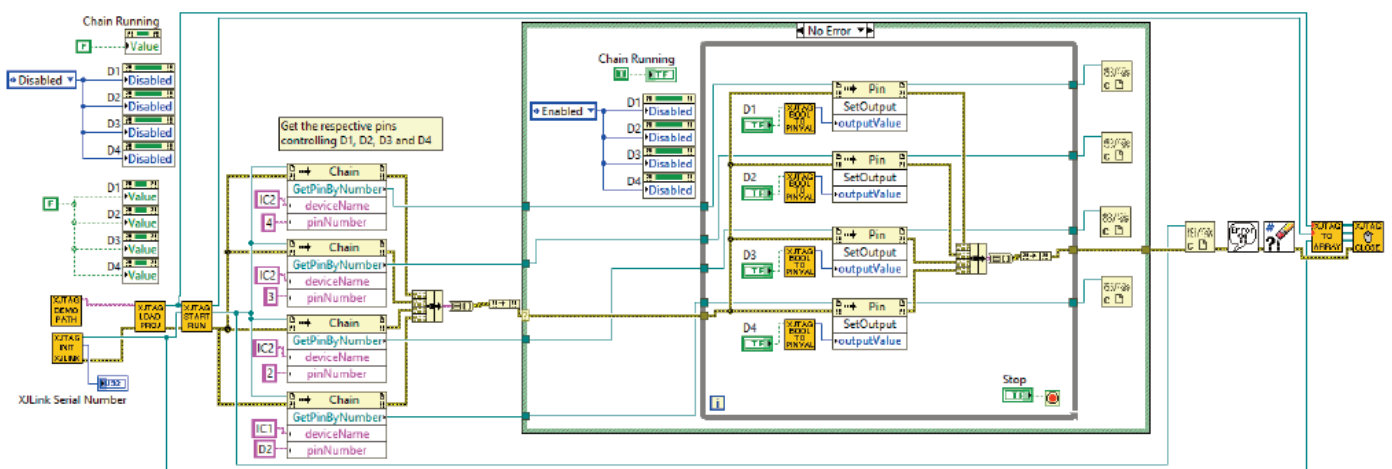


XJIntegration for LabVIEW Users

Quick Start Guide

Version 1

This VI demonstrates how to use the XJAnalysr Integration to write to pins in the JTAG chain. It uses pins connected to each of the LEDs on the XJTAG demoboard to switch those LEDs on or off depending on the state of switches on the front panel.

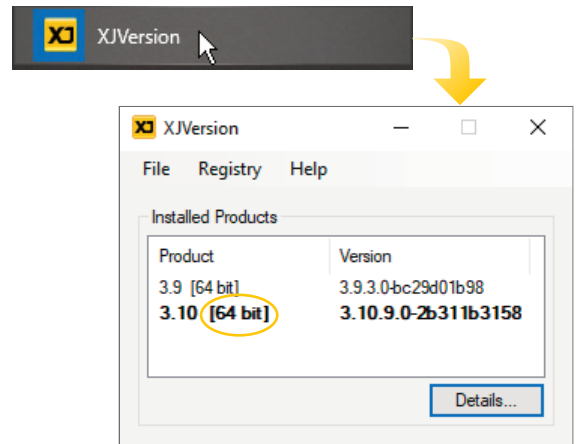


This quick start guide helps LabVIEW users get up and running with an XJIntegration example project.

1. Check Your Software's Bitness

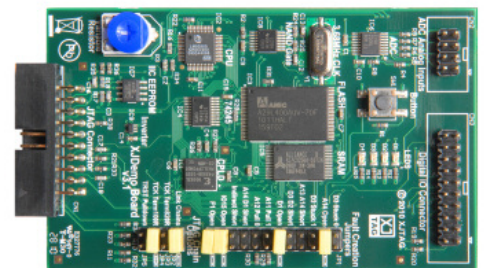
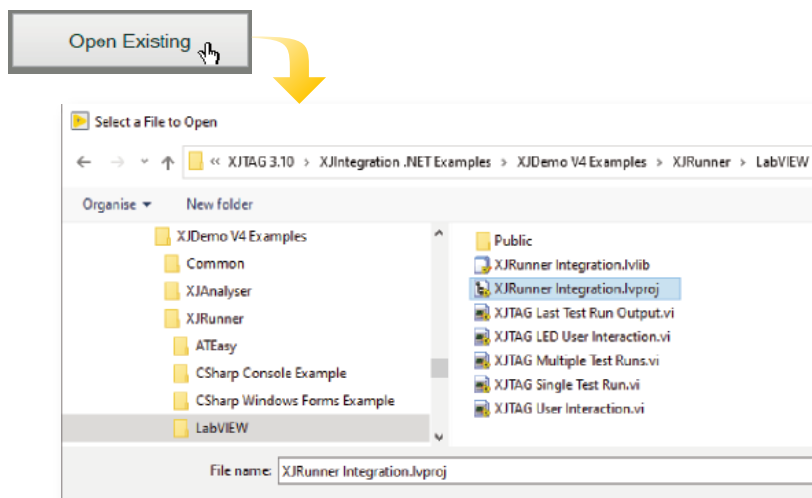
The bitness of the XJTAG installation must match that of your LabVIEW installation: if you are using 64-bit LabVIEW, you must use the 64-bit version of the XJTAG tools. If you are using a 32-bit version of LabVIEW, the 32-bit XJTAG version must be used.

The bitness of the XJTAG installation can be found by launching XJVersion from the Windows Start menu. If the XJTAG software needs to be changed, uninstall the current version and install one with matching bitness in its place.

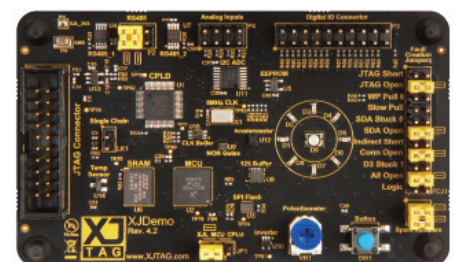


2. Open an Example Project

- Open the XJRunner Integration Project from within LabVIEW by navigating to the *XJIntegration .NET Examples* folder (usually in the *C:\Users\Public\Documents\XJTAG x.y* directory), where x.y is the XJTAG version being used.
- Select either *XJDemo V3 Examples* or *XJDemo V4 Examples*. If you have an XJDemo board, select the folder that matches your version of board.
- Go to the *XJRunner\LabView* folder and open *XJRunnerIntegration.lvproj*.



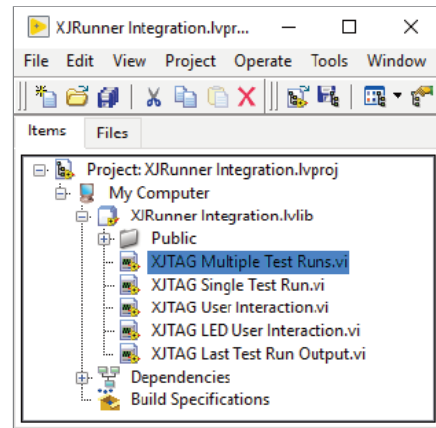
XJDemo v3



XJDemo v4

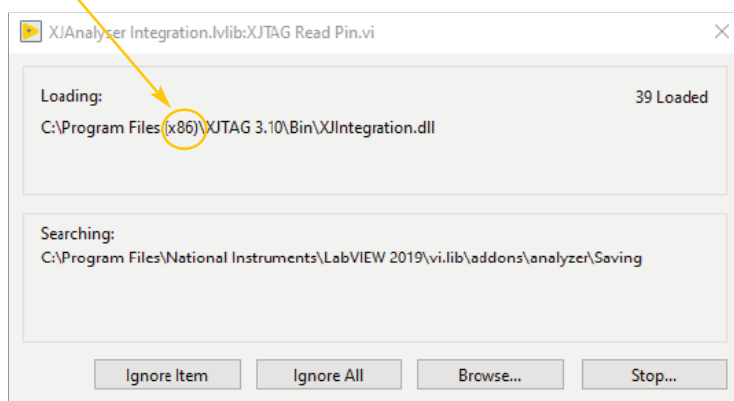
3. Open an Example VI

Double-click the example *XJTAG Multiple Test Runs.vi* from within the .lvproj project library you just opened.



4. 64 Bit Users: Locate XJIntegration.dll

By default, LabVIEW will search the 32-bit directory for XJIntegration.dll



If you are running a 64-bit version of XJDeveloper, LabVIEW will search for *XJIntegration.dll* in the wrong directory.

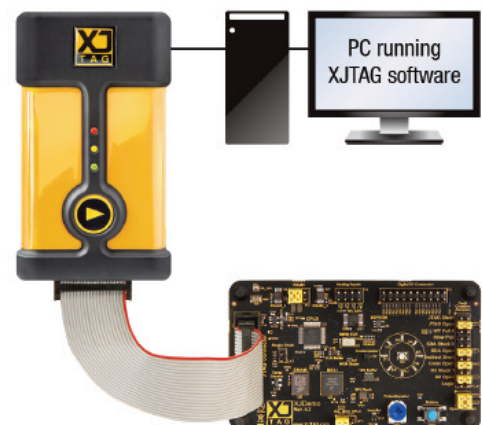
Provide the path to *XJIntegration.dll* when it cannot find the file: for 64-bit XJTAG installations, its default location is *C:\Program Files\XJTAG x.y\bin*.

Ignore the subsequent warnings that paths have changed that will be displayed when opening the project.

5. Connect Equipment

Connect the XJLink2 to your PC using the supplied USB cable.

If you have an XJDemo board, use the ribbon cable provided to connect the XJLink2 to the board's JTAG connector.



6. Run the Example VI

Run the VI.

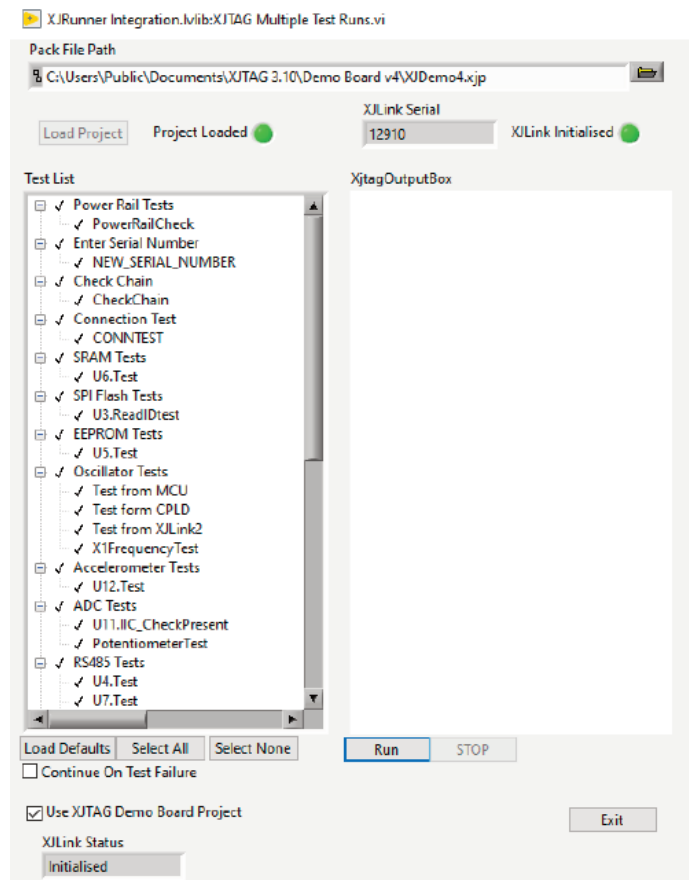
The *XJLink Initialised* indicator will turn green to show the JTAG controller is ready, and its serial number will be displayed.

If necessary, adjust the *Pack File Path* so that it points to *XJDemo4.xjp* (if you have a v4 demo board) or to *XJDemo3.xjp* (if you have a v3 demo board).

The file is normally located in the directory *C:\Users\Public\Documents\XJTAG x.y\Demo Board vZ*, where Z is the version of demo board.

Click the **Load Project** button to load the XJPack file (which contains details of the tests to be run).

After several seconds, the *Project Loaded* indicator will turn green and the test list will be displayed.



7. Test the Board

Press the “Run” button to start testing the board.

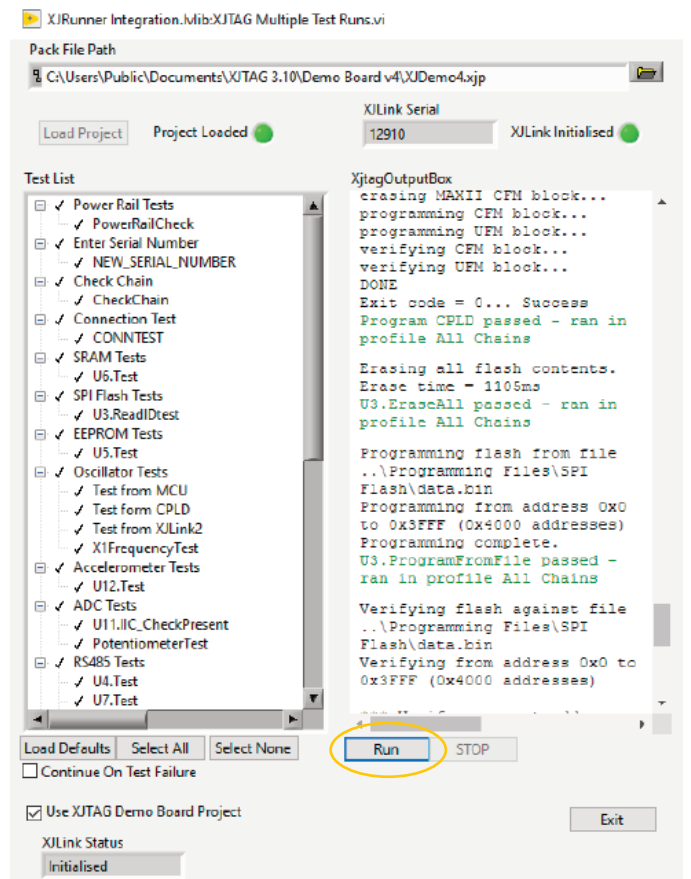
The test output will be displayed in the *XjtagOutputBox*.

When the *Serial Number* dialog box is displayed, enter a number of up to seven characters and click “OK”.

Follow the instructions in the *XjtagOutputBox* and press the keyboard’s spacebar when prompted during the thumbwheel voltage test.

During the LED test, click “Yes” in the displayed dialog box to confirm all the LEDs are functioning. Press and release the SW1 button on the demo board when prompted.

At the end of the tests, the *XjtagOutputBox* will display a summary box of results.

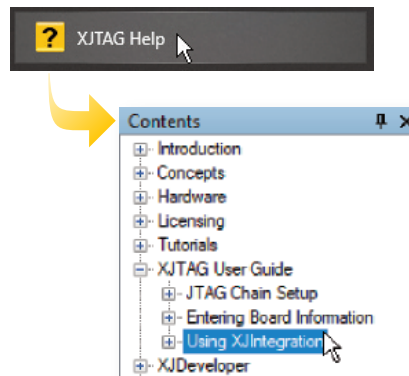


8. Learn More – Watch, Read, Study

Watch the LabVIEW help videos on the XJTAG Academy (academy.xjtag.com).



Read the XJIntegration User Guide in the XJTAG Help System for assistance on using XJIntegration in your own LabVIEW projects. It provides guidance on incorporating XJTAG's example Virtual Instruments into your project, and on calling the XJIntegration API directly in your own VIs. The Help System can be launched from the *Help* menu of your XJTAG application or by clicking the XJTAG Help icon in the Windows Start menu.



Study – for a definitive list of what the XJIntegration API can do and a description of the public methods, check the API Reference section of the XJTAG Help system. The Help System can be launched from the *Help* menu of your XJTAG application or by clicking the XJTAG Help icon in the Windows Start menu.

