

Overview

The Layout Viewer allows you to quickly find the physical location of components, nets and pins on a board. It provides the capability to view layout design data extracted from ODB++ jobs in XJDeveloper, XJInvestigator and XJRunner.

You can use the Layout Viewer to visualise any faults that are found when running tests. The Connection Test output includes clickable links to directly display all of the relevant circuit elements.

Free with XJDeveloper, XJInvestigator and XJRunner

The Layout Viewer is integrated into XJDeveloper, XJInvestigator and XJRunner to help engineers quickly identify faults.

Visualise circuit elements

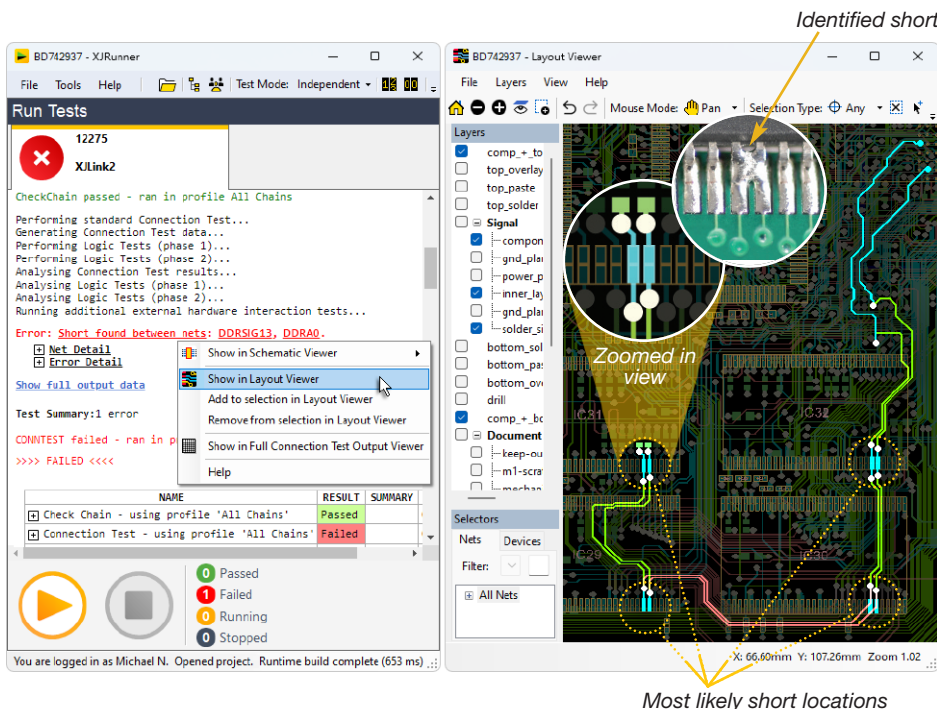
The advanced graphical display highlights the physical location of selected components and nets. Individual layers can be turned on or off as required to make it easy to see specific circuit elements.

Determine the location of faults within seconds

The Layout Viewer can be used to quickly locate where faults are on the board under test. As well as providing details about types of faults and the nets involved, test output can also include clickable links that allow each fault to be easily visualised in the Layout Viewer. Showing the routing of nets helps to locate the fault on the physical board, highlighting potential problem areas.

In the example below, the connection test identified two nets that are shorted together. The layout shows that it is unlikely that the fault is under the BGA device as the pins are not next to each other.

By examining the highlighted pins on the four memory devices, it was quickly identified that the problem was a soldering fault on IC31.



Key Benefit

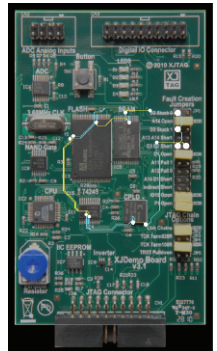
Improve productivity by visualising the exact location of faults to be repaired

Features

- Aids identifying likely points of failure
- Measures distance between objects
- Control over which layers are visible
- Advanced layer and zoom controls
- Exports graphics to the clipboard, a file or printer
- Import pictures for clearer display

Import board pictures

For even more help in identifying where on a board the faults are located, pictures of the front and the back of the board can be imported. These images can then be displayed with its highlighted components and nets.



Test coverage view

The test coverage of your XJTAG project can be shown on the layout view using XJDeveloper. This allows you to easily identify any areas of the board where coverage needs to be improved.

See net values live

XJTAG can display the current values of nets and pins directly on the layout view, from the Analyser screen in XJDeveloper and XJInvestigator. As net values change the display is updated automatically.